

Order Product Items at N-Service Online: consist of

- Audio/Visual Equipment Service
- Booth Name/Logo (For Standard booth only)
- Electrical Fitting & Supplies (Show Day)
- Electrical Fitting & Supplies (Show Day) Lighting
- Electrical Service (Build -Up & Tear Down Period)
- Furniture and Accessories Service
- Miscellaneous Stand Items
- Needle Punch Carpet

N-Service Online System : How to orders in Online service

บริษัท เอ็น.ซี.ซี. แมนเนจเม้นท์ แอนด์ ดิเวลลอปเม้นท์ จำกัด

แผนก EXHIBITION CONTRACTOR (EC)

N-Service
Speed Service Smile

Order Product Item through N-Service Online

URL: <https://ncc-onlineorder.gsnc.com/login> หรือ



User name and Password will provided by staff

NCC

Sign in to shopping

Username

Password

[Forgot password?](#)

Sign In

N.C.C. M&D Co., Ltd. has often encountered numerous short circuit problems causing danger to exhibitors and visitors mainly due to the installation of equipment that is not regulated by exhibitors or contractors, such as illegal connection or equipment adaptation, therefore, all electrical installation works must be carried out by applying the following rules:

1. All electrical installation must conform strictly to the required TISI standard (in Thailand) without any exception.
2. There are two main power supply circuits: “For Exhibit” and “For Lighting”. It is forbidden to misuse the power supply as follows.
 - a. Orders under Section B: Socket/Breaker for Exhibits are allowed for devices such as machinery, engine, TV, Laptop charger, etc. and **not allowed** to apply for all Lighting equipment such as spotlight, LED Ribbon, etc.
 - b. Orders under Section C: Breaker for Lighting are allowed for devices such as Spotlight, LED, Ribbon, etc.
3. The cable of a main power, water, and compressed air supply from the utility hatch, is provided at **2-meters** long. An extension of the length or any relocation are subjected to a surcharge following the price for each equipment.
4. The standard electrical supply is 110V, 220V, or 380V with approximately 10 percent fluctuation.
5. For all electrical usage, it is mandatory to calculate the circuit load with a 20 percent safety margin.
6. It is prohibited for power supply, water, and compressed air wiring equipment to be installed crossing any aisle in the exhibition for safety reasons and not to obstruct traffic for all exhibitors, visitors, and other contractors.
7. A 3-Phase circuit breaker is required to **connect directly** with machinery or engine, otherwise, a **load center** will be required if multi-connection is needed.
8. The company prohibits any equipment installation that causes damage or misuse to our equipment installed for the exhibition.
9. The Electrical Official Contractor reserves the right to disconnect the electrical supply to an installation, which in opinion is deemed as dangerous or likely to cause disturbance to others without prior notice. Exhibitors/contractors will not be entitled to claim any damages both directly and indirectly from any and all parties involved.



If you have any questions, please contact
Contact Person / Service Counter

Address and Contact person of electrical service:

N.C.C. Management & Development Co., Ltd. TAX ID : 0 1055 34007 639 (Head Office)
60 Queen Sirikit National Convention Center, Ratchadapisek Road, Klongtoey Sub-District, Klongtoey District, Bangkok 10110, Thailand
Contact Person : **Ms. Atitiya** Direct:(66-2) 229-3407 E-mail: atitiya.dam@nccimage.com
Accounts: **Ms. Onsiri** Direct: (66-2) 229-3662

Service / Item	Within 18 Jul 24 (Baht)	During 19-30 Jul 24 (Baht)	During 31 Jul - 18 Aug 24 (Baht)
Section A Equipment rental/plus individual fitting, inclusive of power consumption			
E01: Spotlight LED 9 W. standard (Day Light/Warm Light)	600	660	780
E02: Spotlight LED 9 W. with arm (Day Light/Warm Light)	650	715	845
E03: Spotlight Halogen 4 W. (Day Light/Warm Light)	600	660	780
E04: Down Light LED 7 W. –Dia.9.50 cm. (Day Light)	650	715	845
F05: Fluorescent Light 1.2 m. 14 W. (Day Light)	550	605	715
E06: Floodlight LED 30 W. (Warm Light)	1,500	1,650	1,950
E07: Floodlight LED 50 W. (Day Light)	2,500	2,750	3,250
E08: Floodlight LED 100 W. (Day Light)	2,750	3,025	3,575
Section B Socket / Breaker for Exhibits (for Machinery, TV, Notebook...), inclusive of power consumption			
E09: Socket 5 Amp (5 Amp fuse) 220 V. 50 Hz.	700	770	910
E09: Socket 5 Amp (5 Amp fuse) 220 V. 50 Hz., 24 Hrs.	1,400	1,540	1,820
E09: Socket 15 Amp / 220 V. Single Phase 50 Hz.	2,750	3,025	3,575
E10: Breaker 15 Amp / 220 V. Single Phase 50 Hz.	2,400	2,640	3,120
E11: Breaker 15 Amp / 380 V. Three Phase 50 Hz.	7,200	7,920	9,360
E10: Breaker 30 Amp / 220 V. Single Phase 50 Hz.	4,800	5,280	6,240
E11: Breaker 30 Amp / 380 V. Three Phase 50 Hz.	14,400	15,840	18,720
Breaker 60 Amp / 380 V. Three Phase 50 Hz.	28,800	31,680	37,440
Section C Breaker for Lighting (for Spotlight, LED, Ribbon...) exhibitors using their own equipment			
E10: Breaker 15 Amp / 220 V. Single Phase 50 Hz.	9,400	10,340	12,220
E11: Breaker 15 Amp / 380 V. Three Phase 50 Hz.	28,200	31,020	36,660
E10: Breaker 30 Amp / 220 V. Single Phase 50 Hz.	18,800	20,680	24,440
E11: Breaker 30 Amp / 380 V. Three Phase 50 Hz.	56,400	62,040	73,320
Breaker 60 Amp / 380 V. Three Phase 50 Hz.	112,800	124,080	146,640
E12: Socket Connecting (installed by exhibitor) / unit -For Lighting equipment (Max. 5 bulbs. & Not exceeding 100W.) -For LED Ribbon (Max. 5 m. & Not exceeding 100W.) -Max order of 14 units (Breaker will be required) -Only 1 Socket will be provided / Booth	320	350	420
Connecting (installation&supply by N.C.C.) <i>*Price per bulb & Not exceeding 100W.</i>	370	410	480

Remark:

- The above prices are the rental prices for 1 event only (not exceed than 5 show days). A socket must be used for one exhibit at a time. Multi-point connection is not allowed to prevent the risk of power overload.
- Cancellation of orders must be made in writing to N.C.C. Management & Development Co, Ltd. Received **before 18 Jul 2024** shall be 100% refunded, received **before 30 Jul 2024** shall be 50% refunded. There will be no refund for cancellation during Set up and show day.
- A surcharge of 100% of electrical equipment will be added if you require 24-hour operating services.
- The standard supply is 110V, 220V or 380V with approximately 10% fluctuation. For the safety of your equipment, please use a stabilizer.
- The cable of a breaker; from the utility hatch, is 2-meter long provided, an extension of the length is subject to surcharge of 220 Baht/m. (1P) and 450 Baht/m. (3P)
- Relocation cost ; **Equipment: 220 Baht/Unit, Utility Hole (1 Phase 220V): 1,300 Baht/Unit, Utility Hole (3 Phase 380V): 2,500 Baht/Unit** (not include vat 7%)
- Exhibitor must indicate all position in **Utility Point Form**. All relocation on-site will be at exhibitor's expense.
- All on-site orders are to be paid in full cash (Thai Bath) only. **Electricity for show day full turn on 14 Aug 2024 (13.00 PM)**
- Withholding tax of 3% of services may be deducted only when applying with an official withholding tax form upon placing order.
- Orders are valid only when accompanied with full payment by cash, company cheque or transfer in favor of "N.C.C. Management & Development Co., Ltd."

Payment process:

Electrical order will be success, when the exhibitor completed the full payment only, We allow to pay by Thai cash baht or cash cheque held to N.C.C Management and Development Co., Ltd. Another payment allowable is Bill payment; When your order are completed, Our Accounting will send the official invoice to via email that informed in the order form. Scanning the invoice's barcode to complete a payment (Please complete information in the order form for the correctly invoice)

Please contact our Accounting for additional information or assistance about the receipt and invoice

Accounting contact : Ms. Onsiri (Jeab) 02-229-3662 / Email : ncc-ec@qsncc.com

Ms. Paweena (Nam) 02-229-3664 / Email : ncc-ec@qsncc.com

TAX ID : 105534007639 (Official)

Register for receive Username & Password CLICK HERE

Link : <https://forms.gle/VFy7X2yqzZoE5TSs6>

OR >> SCAN HERE



ELECTRIC EQUIPMENT

NCC

E-01



Spotlight 9W. standard
(LED)

E-02



Spotlight 9W. with arm
(LED)

E-03



Spotlight Halogen 4W.
with arm (LED)

E-04



Down Light 7W. (LED)

E-05



Fluorescent Light 1.2 m. 14W.
(LED)

E-06



Floodlight LED 30W. 220V.
Warm Light (LED)

E-07



Floodlight LED 50W. 220V.
Warm Light (LED)

E-08



Floodlight 100W. 220V.
Day Light (LED)

E-09



Socket 5 Amp (5 Amp fuse)
220V. 50Hz. (Not For lighting)

E-10



Circuit Breaker
Single Phase 220V. 50Hz.

E-11



Circuit Breaker
Three Phase 380V. 50Hz.

E-12



Socket for connecting
by exhibitors per unit of 100W.

N.C.C.Management & Development Co.,Ltd.



**Electrical Service
(For Build-up & Tear-Down Period)
Deadline July 18, 2024**

Address and Contact person of electrical service:

N.C.C. Management & Development Co., Ltd. TAX ID : 0 1055 34007 639 (Head Office)

60 Queen Sirikit National Convention Center, Ratchadapisek Road, Klongtoey Sub-District, Klongtoey District, Bangkok 10110, Thailand

Contact Person : **Ms. Atitiya**

Direct:(66-2) 229-3407

E-mail: atitiya.dam@nccimage.com

Accounts: **Ms. Onsiri**

Direct: (66-2) 229-3662

Set Up Date	13 Aug 2024	14 Aug 2024	
Tear Down Date	18 Aug 2024		

DESCRIPTION	Within 18 Jul 24 (Baht)/Day	During 19-30 Jul 24 (Baht)/Day	During 31 Jul -18 Aug 24 (Baht)/Day
E10: Breaker 15 Amp / 220 V. Single Phase 50 Hz.	1,000	1,100	1,300
E11: Breaker 15 Amp / 380 V. Three Phase 50 Hz.	3,000	3,300	3,900
E10: Breaker 30 Amp / 220 V. Single Phase 50 Hz.	2,000	2,200	2,600
E11: Breaker 30 Amp / 380 V. Three Phase 50 Hz.	6,000	6,600	7,800

Remark :

1. Cancellation of orders must be made in writing to N.C.C. Management & Development Co, Ltd. Received **before 18 Jul 2024** shall be 100% refunded, received **before 30 Jul 2024** shall be 50% refunded. There will be no refund for cancellation during set-up and show day.
2. A surcharge of 100% of electrical equipment will be added if you require 24-hour operating services.
3. The cable of a breaker; from the utility hatch, is 2-meter long provided, an extension of the length is subject to **surcharge of 220 Baht/m. (1P) and 450 Baht/m. (3P)**
4. Relocation cost; **Equipment:** 220 Baht/Unit, **Utility Hole (1 Phase 220V):** 1,300 Baht/Unit, **Utility Hole (3 Phase 380V):** 2,500 Baht/Unit (not include vat 7%)
5. Exhibitor must indicate all position in **Utility Point Form**. All relocation on-site will be at exhibitor's expense.
6. All on-site orders are to be paid in full cash (Thai Bath) only.
7. Withholding tax of 3% of services may be deducted only when applying with an official withholding tax form upon placing order.

Payment process :

Electrical order will be success, when the exhibitor completed the full payment only, We allow to pay by Thai cash baht or cash cheque held to N.C.C Management and Development Co., Ltd. Another payment allowable is Bill payment; When your order are completed, Our Accounting will send the official invoice to via email that informed in the order form. Scanning the invoice's barcode to complete a payment (Please complete information in the order form for the correctly invoice)

Please contact our Accounting for additional information or assistance about the receipt and invoice

Accounting contact : Ms. Onsiri (Jeab) 02-229-3662 / Email : ncc-ec@qsncc.com

Ms. Paweena (Nam) 02-229-3664 / Email : ncc-ec@qsncc.com

TAX ID : 105534007639 (Official)

Register for receive Username & Password [CLICK HERE](#)

Link : <https://forms.gle/VFy7X2yqzZoE5TSs6>

Or >> SCAN HERE



Please complete and return this form to:

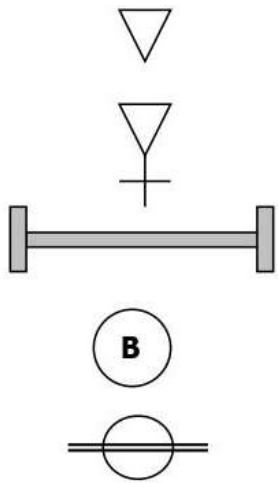
N.C.C. Management & Development Co., Ltd. TAX ID : 0 1055 34007 639 (Head Office)

60 Queen Sirikit National Convention Center, Ratchadapisek Road, Klongtoey Sub-District, Klongtoey District, Bangkok 10110, Thailand

Contact Person : **Ms. Atitiya**

Direct:(66-2) 229-3407

E-mail: atitiya.dam@nccimage.com



Spotlight
(Picture: E01)

Spotlight w/ arm
(Picture: E02)

Fluorescent Lamp
(Picture: E05)

Breaker
(Picture: E10, E11)

Socket
(Picture: E09)



**Socket Connecting
(by Exhibitor)**(Picture: E12)

Water Supply

Drain

Compressed Air

BACK

LEFT

RIGHT

FRONT



Exhibitor must indicate all symbol points on this form. Otherwise, we will place the supply point on our contractor's discretion. N.C.C. will not be responsible for any relocation. All relocation cost will be at exhibitor's expense.

Please complete and return this form to:
N.C.C. Management & Development Co., Ltd. TAX ID : 0 1055 34007 639 (Head Office)

60 Queen Sirikit National Convention Center, Ratchadapisek Road, Klongtoey Sub-District, Klongtoey District, Bangkok 10110, Thailand

 Contact Person : **Ms. Atitiya**

Direct:(66-2) 229-3407

E-mail: atitiya.dam@nccimage.com

 Accounts: **Ms. Onsiri**

Direct: (66-2) 229-3662

DESCRIPTIONS	Within 18 Jul 24 (Baht)	During 18-30 Jul 24 (Baht)	During 31 Jul - 18 Aug 24 (Baht)
LED Screens			
43 inch LED.	17,675	19,442	22,977
50 inch LED.	21,425	23,568	27,853
Stand for 43/50 inch Screen (eye level).	2,990	3,289	3,887
Hanging Brackets for 43/50 inch Screen (for partition wall).	1,880	2,068	2,444
Computer + Laptop + Monitor			
Laptop Standard.	13,125	14,438	17,063
PC (Personal Computer) + 24 inch LCD	8,900	9,790	11,570
24 inch LCD flat screen monitor.	4,580	5,038	5,954
Projectors			
Data Projector 3200 ANSI Lm, XGA	23,435	25,779	30,466
Data Projector 4500 ANSI Lm, XGA	35,150	38,665	45,695
Data Projector 5000 ANSI Lm, XGA	58,585	64,444	76,161
Projective Screens			
Screen, 2x 3 m. (150") Projection.	18,750	20,625	24,375
Screen, 3x 4 m. (200") Projection.	29,995	32,995	38,994
Screen, 4.5x 6 m. (500") Projection.	62,665	68,932	81,465

Remarks :

- Order on-site may not be provided. If available, it is subject to surcharge by full cash payment only (Thai Baht).
- There will no refund or cancellation after form submission.**
- Order on-site may not be provided. If available, it is subject to **surcharge** by full cash payment only (Thai Baht).

Payment process :

Electrical order will be success, when the exhibitor completed the full payment only, We allow to pay by Thai cash baht or cash cheque held to N.C.C Management and Development Co., Ltd. Another payment allowable is Bill payment; When your order are completed, Our Accounting will send the official invoice to via email that informed in the order form. Scanning the invoice's barcode to complete a payment (Please complete information in the order form for the correctly invoice)

Please contact our Accounting for additional information or assistance about the receipt and invoice

Accounting contact : Ms. Onsiri (Jeab) 02-229-3662 / Email : ncc-ec@qsnc.com

Ms. Paweena (Nam) 02-229-3664 / Email : ncc-ec@qsnc.com

TAX ID : 105534007639 (Official)

Register for receive Username & Password [CLICK HERE](#)

Link : <https://forms.gle/VFy7X2yqzZoE5TSs6>

Or >> SCAN HERE



Please complete and return this form to:
N.C.C. Management & Development Co., Ltd. TAX ID : 0 1055 34007 639 (Head Office)

60 Queen Sirikit National Convention Center, Ratchadapisek Road, Klongtoey Sub-District, Klongtoey District, Bangkok 10110, Thailand

 Contact Person : **Ms. Atitiya**

Direct:(66-2) 229-3407

E-mail: atitiya.dam@nccimage.com

 Accounts: **Ms. Onsiri**

Direct: (66-2) 229-3662

MOTOR	PRESSURE		Air Flow @Free Load		Within 18 Jul 24 (Baht)	During 19-30 Jul 24 (Baht)	During 31 Jul - 18 Aug 24 (Baht)
	PSI	BAR	L/M	CFM			
1 HP	100	7	88	3.11	11,035	12,139	14,346
2 HP	100	7	180	6.40	15,760	17,336	20,488
3 HP	100	7	300	10.60	19,705	21,676	25,617
5 HP	100	7	700	24.50	30,170	33,187	39,221

1. **There will no refund or cancellation after form submission.**
2. The above prices include power supply and electrical consumption.
3. Only compressors of not over 0.5 HP will be permitted in your stand.
4. A 2-metre hose and connecting services will be provided (upon request) free of charge. Exhibitors must however bring their own fitting/connectors for attachment of their exhibits to the hose.
5. The hose exceeding 2 meters will be **charged 220.- Baht per meter.**
6. Our compressed air outlet is **not equipped with an air-filter nor an air-dryer**, exhibitors may bring their own equipment.
7. N.C.C. will provide free of charge upon request, compressed air for testing purpose only during 3 hours on set up day. Any use of compressed air beyond 3 hours will be subject to additional charge of one day rate.
8. Late order may not be provided and, if available, will be subject to a surcharge with full cash payment.
9. Relocation cost ; **Utility Hole 1,300 Baht**
10. Exhibitor must indicate all position in **Utility Point Form**. All relocation on-site will be at exhibitor's expense.

Payment process :

Electrical order will be success, when the exhibitor completed the full payment only, We allow to pay by Thai cash baht or cash cheque held to N.C.C Management and Development Co., Ltd. Another payment allowable is Bill payment; When your order are completed, Our Accounting will send the official invoice to via email that informed in the order form. Scanning the invoice's barcode to complete a payment (Please complete information in the order form for the correctly invoice)

Please contact our Accounting for additional information or assistance about the receipt and invoice

Accounting contact : Ms. Onsiri (Jeab) 02-229-3662 / Email : ncc-ec@qsnc.com

Ms. Paweena (Nam) 02-229-3664 / Email : ncc-ec@qsnc.com

TAX ID : 105534007639 (Official)

Register for receive Username & Password [CLICK HERE](#)

Link : <https://forms.gle/VFy7X2yqzZoE5TSs6>

Or >> [SCAN HERE](#)





**Water Supply And Drainage
Deadline July 18, 2024**

Please complete and return this form to:

N.C.C. Management & Development Co., Ltd. TAX ID : 0 1055 34007 639 (Head Office)

60 Queen Sirikit National Convention Center, Ratchadapisek Road, Klongtoey Sub-District, Klongtoey District, Bangkok 10110, Thailand

Contact Person : **Ms. Atitiya**

Direct:(66-2) 229-3407

E-mail: atitiya.dam@nccimage.com

Accounts: **Ms. Onsiri**

Direct: (66-2) 229-3662

SERVICE ITEM	Within 18 Jul 24 (Baht)	During 19-30 Jul 24 (Baht)	During 31 Jul - 18 Aug 24 (Baht)
Water Inlet 13 mm. (1/2") Hose And Outlet 40 mm. Hose	8,230	9,053	10,699
Water Inlet/Outlet Piping And Wash Basin	11,230	12,353	14,599

Remarks :

1. **There will no refund or cancellation after form submission.**
2. Exhibitor who requires plumbing should state their details below or request separately and fax to us for quotation well in advance.
3. The hose exceeding 2 meters will be **charged 450.- Baht per meter.**
4. Exhibitor must indicate all position in **Utility Point Form**. All relocation on-site will be at exhibitor's expense.
5. Relocation cost ; **Utility Hole 2,500 Baht**
6. Late order may not be provided and, if available, will be subject to a surcharge with full cash payment.

Payment process :

Electrical order will be success, when the exhibitor completed the full payment only, We allow to pay by Thai cash baht or cash cheque held to N.C.C Management and Development Co., Ltd. Another payment allowable is Bill payment; When your order are completed, Our Accounting will send the official invoice to via email that informed in the order form. Scanning the invoice's barcode to complete a payment (Please complete information in the order form for the correctly invoice)

Please contact our Accounting for additional information or assistance about the receipt and invoice

Accounting contact : Ms. Onsiri (Jeab) 02-229-3662 / Email : ncc-ec@qsnc.com

TAX ID : 105534007639 (Official)

Register for receive Username & Password [CLICK HERE](#)

Link : <https://forms.gle/VFy7X2yqzZoE5TSs6>

Or >> SCAN HERE



Pet Expo Championship 2024 (Aug,15 - 18 2024)

Please complete and return this form to:

N.C.C. Management & Development Co., Ltd

Contact Person: Mr. Chanamet (Dome) Tel: (66-2) 229-3411

E-mail : chanamate.pra@nccimage.com

Accounts: Ms. Paweena

Tel: (66-2) 229-3664

E-mail : ncc-ec@qsncc.com

Ref	Description	Color	Size WxLxH (cm.)	Early Rate 18/07/24 (Baht)	Standard Rate 19 - 30/07/24 (Baht)	Onsite Rate 31/07 - 18/08/24 (Baht)
F01	Counter showcase	White	50x100x100	2,500	2,750	3,250
F02	Tall showcase (without 1 downlight)	White	50x50x250	3,500	3,850	4,550
	Glass shelf inside tall showcase	-	47.7x47.7	300	330	390
F03	Big showcase (without 2 downlights)	White	50x100x250	5,500	6,050	7,150
	Glass shelf for big showcase	-	47.7x97.2	500	550	650
F04	Lockable cabinet	White	50x100x75	1,100	1,210	1,430
F05	2-tier counter	White	50x100x120	1,300	1,430	1,690
F06	Counter	White	50x100x75	1,300	1,430	1,690
	Counter	White	50x50x100	1,300	1,430	1,690
F07	Product shelf	White	50x50x120	800	880	1,040
F08	Display stand	White	50x50x50	600	660	780
	Display stand	White	50x50x75	600	660	780
	Display stand	White	50x50x100	600	660	780
F09	Receptionist Desk	White	55x120x75	600	660	780
F10	Round table	White	75x75	600	660	780
F11	Coffee table	White	65x65x40	500	550	650
F12	Wall shelf – Flat shelf	White	25x100	300	330	390
	Wall shelf – Slope shelf	White	25x100	300	330	390
F13	Fiber chair	Grey	47x50x44 /77	350	385	455
F14	Black stool	Black	50x50x85	650	715	845
F15	S-Hook	Grey	65	50	55	65

Remarks :

1. Amendment or reproduction during set-up or show day will be charged. The rate is on a case-by-case basis.
2. Please email us a copy of evidence of your payment (copy of bank transfer etc.)
3. Order on-site may not be provided. If available, it is subject to surcharge by full cash payment only (Thai Baht).
4. 7% VAT is excluded in the above prices.

Register for receive Username & Password [CLICK HERE](#)

Link : <https://forms.gle/VFy7X2yqzZoE5TSs6>

Or >> [SCAN HEAR](#)



Furniture

NCC

F-01



Counter Showcase
50X100X100 cm.

F-02



Tall Showcase
50X50X250 cm.

F-03



Big Showcase
50X100X250 cm.

F-04



Lockable Cabinet
50X100X75 cm.

F-05



2 - Tier Counter
50X100X100 / 120 cm.

F-06



Counter
50X100X75 / 100 cm.

F-07



Product Shelf
50X50X120 cm.

F-08



Display Stand
50X50X50 / 75 / 100 cm.

F-09



Receptionist Desk
85X120X75 cm.

F-10



Round Table
75X75X75 cm.

F-11



Coffee Table
65X65X40 cm.

F-12



Wall Shelf
25X100 cm.

F-13



Fiber Chair
50X50X50 / 80 cm.

F-14



Black Stool
50X50X85 / 120 cm.

F-15



S-Hook
6.5 cm.

Please complete and return this form to:

N.C.C. Management & Development Co., Ltd

Contact Person: Mr. Chanamet (Dome) Tel: (66-2) 229-3411

E-mail : chanamate.pra@nccimage.com

Accounts: Ms. Onsiri/Ms. Paweena Tel: (66-2) 229-3662 , 3664

E-mail : ncc-ec@qsncc.com

Description	Size WxLxH	Early Rate 18/07/24 (Baht)	Standard Rate 19 - 30/07/24 (Baht)	Onsite Rate 31/07 - 18/08/24 (Baht)
● Panel (Modular system) Color - white	1.0x2.5 m. high	800.-/unit	880.-/unit	1,040.-/unit
● Fascia board with standard lettering 10 cm. high	30 cm. wide	400.-/running m.	440.-/running m	520.-/running m
● Folding door (Modular system) : Light grey	1.0x2.0 m.	1,500.-/unit	1,650.-/unit	1,950.-/unit
● Wood platform (without carpet)	15 mm. thick	350.-/sq. m.	385.-/sq. m.	N/A
● Needle punch carpet Color : Red, Blue, Black, Grey, Green		250.-/sq. m.	275.-/sq. m.	325.-/sq. m.

Remarks :

1. Amendment or reproduction during set-up or show day will be charged. The rate is on a case-by-case basis.
2. Please email us a copy of evidence of your payment (copy of bank transfer etc.)
3. Order on-site may not be provided. If available, it is subject to surcharge by full cash payment only (Thai Baht).
4. 7% VAT is excluded in the above prices.

Register for receive Username & Password [CLICK HERE](#)

Link : <https://forms.gle/VFy7X2yqzZoE5TSs6>

Or >> [SCAN HEAR](#)





MISCELLANEOUS



PANEL 100x250 CM
(SYSTEM BUILT)



FOLDING DOOR 100x200 CM
(SYSTEM BUILT)



FASCIA BOARD WITH STANDARD LETTERING 10CM. HIGH 100x30 CM



WOOD PLATFORM WITHOUT CARPET



NEEDLE PUNCH CARPET
RED/BLUE/GREY/GREEN

N.C.C.Management & Development Co.,Ltd.